

SPECIFICATIONS

Type Double Sided

Where to fix Fixed in between two posts

LED Source LED Modules
SA 2398 Equivalent
from SA-LED Australia

Power Source Suitable Power Supply
from SA-LED Australia

Dimension Length Any Size
Height Up to 2,000mm
Deep 400mm
**Post deep : Max 200mm*

Face Flexface Kedar Finish

Return Aluminum Extrusion Bar
SA LM165 from SA-LED Australia
- Mill(2B) Finish
- 2Pac Spray (Other colours)
- Power Coating

Back ACM or Equivalent Material

Cover Size 88mm Half Cover x 5mm Trim
SA SC88 from SA-LED Australia

- Price do not include acrylic sheets.
- Price do not include packaging and delivery
- Artwork has to be provided by the client.
- Please make sure to include the original artwork files that is:
 - ✓ 1:1 Scale
 - ✓ 100% Vector(*.eps)
 - ✓ PDF File format (*.pdf)
 - ✓ CorelDRAW (*.cdr, *.dxf)

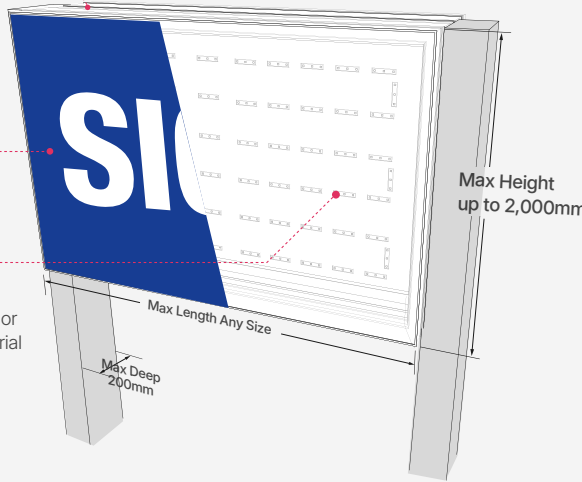
3D STRUCTURE

Front View

Return
Aluminum

Face
Flexface
Kedar Finish

LEDs
Installed on the
fabricated ACM or
Equivalent Material

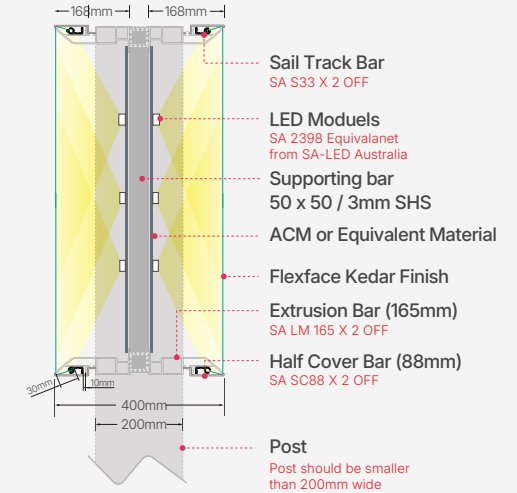


Side View

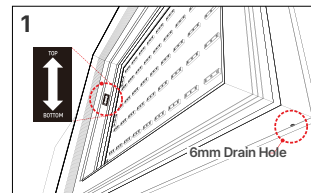
*Sail Track with Kedar edging



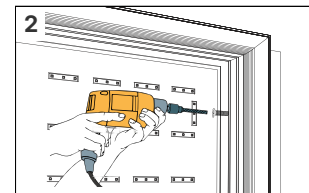
Side View : Fixed in between two posts



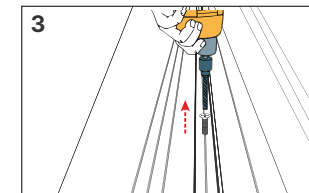
INSTALLATION GUIDE



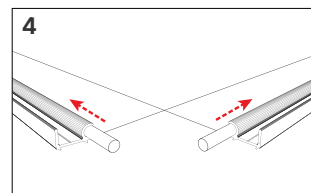
TOP & BOTTOM indicative sticker on the side, predrilled 6mm drain hole on the bottom.



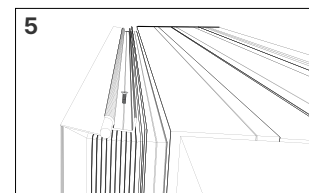
Fixed directly into post



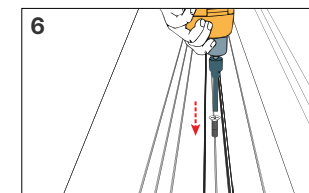
Remove screw from cover bar.



Put the rope edge into sail track bar.



Tension in the order of top, left, right and bottom.



Put the cover bar back on, fix it with screw.

PROJECTS

